

Gabriel Fauré (1845-1924): Messe Basse

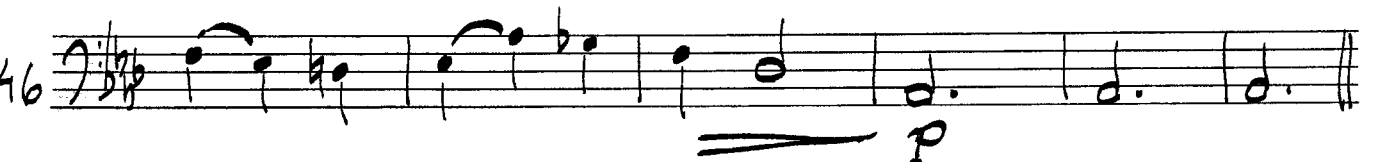
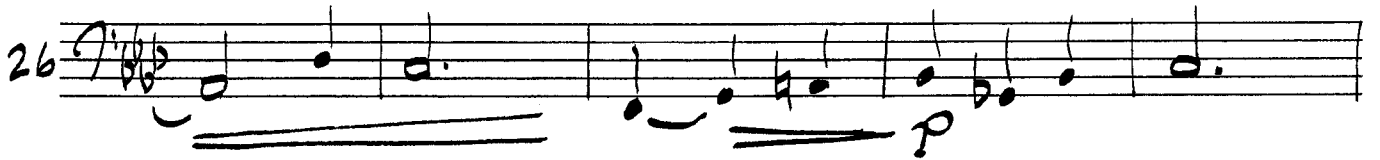
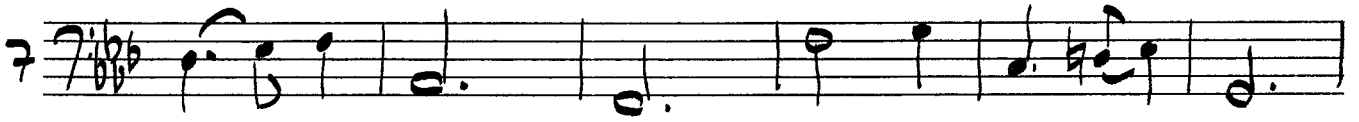
I. Kyrie Eleison

Vlc.

Orig. pour chœur des femmes, soprano solo et orgue.

Arr. pour chœur, solo et ensemble de cordes 2010 H. Colding-Jørgensen

Allegretto Moderato



Gabriel Fauré (1845-1924): Messe Basse

II. Sanctus

Vlc.

Orig. pour chœur des femmes et orgue.

Arr. pour chœur et ensemble de cordes 2010 H. Colding-Jørgensen

Moderato

Handwritten musical score for Violin (Vlc.) in G major, C time signature, Moderato tempo. The score consists of seven staves of music. The first staff starts with a treble clef, a key signature of one sharp (F#), and a common time signature (C). The tempo is marked "Moderato". The score includes various dynamics such as *p*, *f*, *mf*, and *mp*, along with crescendos and first endings. The piece concludes with a double bar line and the word "CORO" written vertically.

Gabriel Fauré (1845-1924): Messe Basse

III. Benedictus

Vlc.

Orig. pour chœur des femmes, soprano solo et orgue.

Arr. pour chœur, solo et ensemble de cordes 2010 H. Colding-Jørgensen

Andante Moderato

Handwritten musical score for Violin (Vlc.) in F major, 8/8 time. The score consists of eight staves of music, numbered 1 through 35. The tempo is marked *Andante Moderato*. The key signature has one flat (F major). The score includes various musical notations such as notes, rests, slurs, and dynamic markings. The dynamics are *p* (piano) at the beginning, *cresc.* (crescendo) starting at measure 26, and *mf* (mezzo-forte) at measure 26. There are also slurs and accents throughout the piece.

Gabriel Fauré (1845-1924): Messe Basse
IV. Agnus Dei

Vlc.

Orig. pour chœur des femmes et orgue.

Arr. pour chœur et ensemble de cordes 2010 H. Colding-Jørgensen

Andante Moderato

mp

7

13

18

25

31

38

44

50

55

61

68

mp

p

f

p dolce

cresc.

f

p

sempre p

pp